



accessory for VL1250, VL1600, front mounted rotary operator standard

Figure similar

Model				
product brand name	SETRON			
Accessories				
accessories	Accessories for VL1250, VL1600			
Mechanical Design				
net weight	3.61 kg			
General Product Approval		EMC	Declaration of Conformity	Test Certificates

[Miscellaneous](#)



[Special Test Certificate](#)

Marine / Shipping

other



[Confirmation](#)

[Miscellaneous](#)

other

[Environmental Confirmations](#)

[Manufacturer Declaration](#)

Further information

Information- and Downloadcenter (Catalogs, Brochures,...)

<http://www.siemens.com/lowvoltage/catalogs>

Industry Mall (Online ordering system)

<https://mall.industry.siemens.com/mall/en/en/Catalog/product?mfb=3VL9800-3HA00>

Service&Support (Manuals, Certificates, Characteristics, FAQs,...)

<https://support.industry.siemens.com/cs/ww/en/ps/3VL9800-3HA00>

Image database (product images, 2D dimension drawings, 3D models, device circuit diagrams, ...)

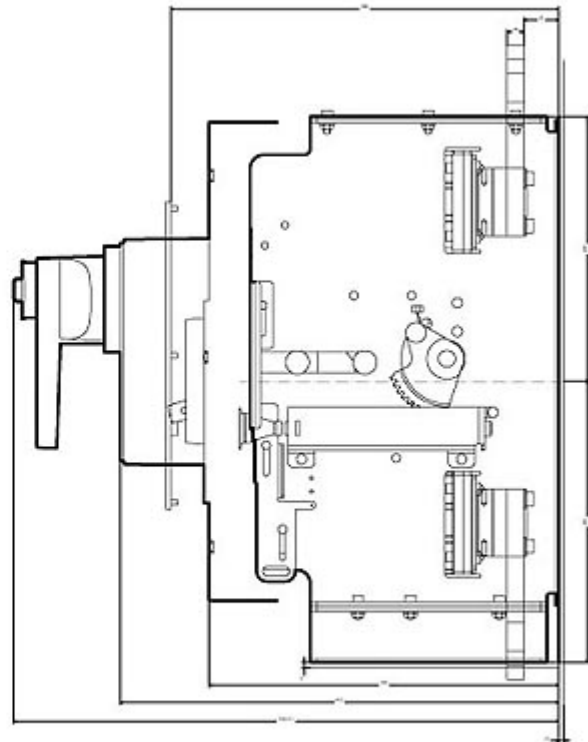
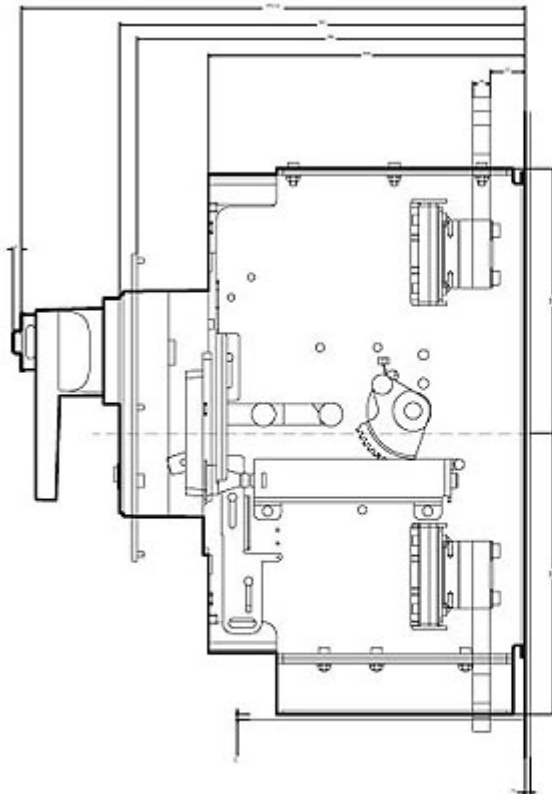
http://www.automation.siemens.com/bilddb/cax_en.aspx?mlfb=3VL9800-3HA00

CAx-Online-Generator

<http://www.siemens.com/cax>

Tender specifications

<http://www.siemens.com/specifications>



(1) Ausgefahren
(2) Eingefahren

