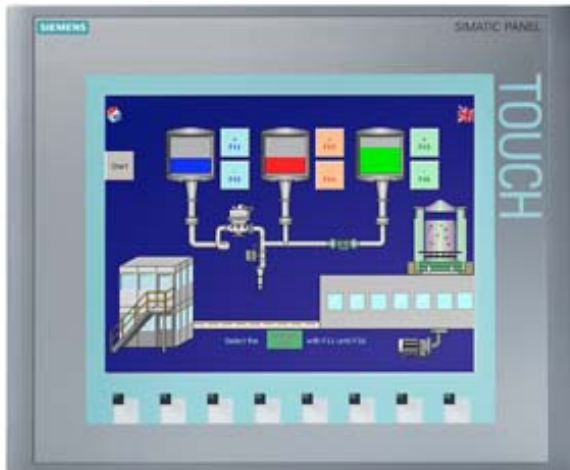


SIMATIC HMI KTP1000 Basic Color DP, Basic Panel, Key/touch operation, 10" TFT display, 256 colors, MPI/PROFIBUS DP interface, configurable as of WinCC flexible 2008 SP2 Compact/ WinCC Basic V11/ STEP 7 Basic V11, contains open-source software, which is provided free of charge see enclosed CD



General information	
Product type designation	KTP1000 Basic color DP
Display	
Design of display	TFT
Screen diagonal	10.4 in
Display width	211.2 mm
Display height	158.4 mm
Number of colors	256
Resolution (pixels)	
• Horizontal image resolution	640 Pixel
• Vertical image resolution	480 Pixel
Backlighting	
• MTBF backlighting (at 25 °C)	50 000 h
• Backlight dimmable	No
Control elements	
Keyboard fonts	
• Function keys	
— Number of function keys	8

— Number of function keys with LEDs	0
• Keys with LED	No
• System keys	No
• Numeric keyboard	Yes; Onscreen keyboard
• alphanumeric keyboard	Yes; Onscreen keyboard
Touch operation	
• Design as touch screen	Yes
Installation type/mounting	
Mounting position	vertical
Rack mounting	No
Wall mounting/direct mounting	No
Mounting in portrait format possible	No
Mounting in landscape format possible	Yes
maximum permissible angle of inclination without external ventilation	35°
Supply voltage	
Type of supply voltage	DC
Rated value (DC)	24 V
permissible range, lower limit (DC)	19.2 V
permissible range, upper limit (DC)	28.8 V
Input current	
Current consumption (rated value)	0.6 A
Starting current inrush I ² t	0.2 A ² ·s
Power	
Active power input, typ.	15 W
Processor	
Processor type	RISC 32 bit
Memory	
Flash	Yes
RAM	Yes
Memory available for user data	2 Mbyte
Type of output	
Acoustics	
• Buzzer	Yes
• Speaker	No
Time of day	
Clock	
• Hardware clock (real-time)	No
• Software clock	Yes

- retentive
- synchronizable

No

Yes

Interfaces

Number of industrial Ethernet interfaces	0
Number of RS 485 interfaces	1
Number of RS 422 interfaces	1
Number of RS 232 interfaces	0
Number of USB interfaces	0
Number of 20 mA interfaces (TTY)	0
Number of parallel interfaces	0
Number of other interfaces	0
Number of SD card slots	0
With software interfaces	No

Industrial Ethernet

- Industrial Ethernet status LED

0

Protocols

PROFINET	No
Supports protocol for PROFINET IO	No
IRT	No
PROFIBUS	Yes
MPI	Yes

Protocols (Ethernet)

- TCP/IP
- DHCP
- SNMP
- DCP
- LLDP

No

No

No

No

No

WEB characteristics

- HTTP
- HTML

No

No

Further protocols

- CAN
- EtherNet/IP
- MODBUS

No

No

Yes; Modicon (MODBUS RTU)

Interrupts/diagnostics/status information

Diagnoses

- Diagnostic information readable

No

Degree and class of protection

IP (at the front)	IP65
IP (rear)	IP20
NEMA (front)	

- Enclosure Type 4 at the front Yes
- Enclosure Type 4x at the front Yes

Standards, approvals, certificates

CE mark	Yes
cULus	Yes
RCM (formerly C-TICK)	Yes
KC approval	Yes

Use in hazardous areas

- ATEX Zone 2 No
- ATEX Zone 22 No
- cULus Class I Zone 1 No
- cULus Class I Zone 2, Division 2 No
- FM Class I Division 2 No

Marine approval

- Germanischer Lloyd (GL) Yes
- American Bureau of Shipping (ABS) Yes
- Bureau Veritas (BV) Yes
- Det Norske Veritas (DNV) Yes
- Lloyds Register of Shipping (LRS) Yes
- Nippon Kaiji Kyokai (Class NK) Yes
- Polski Rejestr Statkow (PRS) No

Ambient conditions

Ambient temperature during operation

- Operation (vertical installation)
 - For vertical installation, min. 0 °C
 - For vertical installation, max. 50 °C
- Operation (max. tilt angle)
 - At maximum tilt angle, min. 0 °C
 - At maximum tilt angle, min. 40 °C

Ambient temperature during storage/transportation

- min. -20 °C
- max. 60 °C

Relative humidity

- Operation, max. 90 %; no condensation

Operating systems

proprietary	Yes
pre-installed operating system	
• Windows CE	No

Configuration

Message indicator	Yes
-------------------	-----

Alarm system (incl. buffer and acknowledgment)	Yes
Process value display (output)	Yes
Process value default (input) possible	Yes
Recipe management	Yes
Configuration software	
• STEP 7 Basic (TIA Portal)	Yes; via integrated WinCC Basic (TIA Portal)
• STEP 7 Professional (TIA Portal)	Yes; via integrated WinCC Basic (TIA Portal)
• WinCC flexible Compact	Yes
• WinCC flexible Standard	Yes
• WinCC flexible Advanced	Yes
• WinCC Basic (TIA Portal)	Yes
• WinCC Comfort (TIA Portal)	Yes
• WinCC Advanced (TIA Portal)	Yes
• WinCC Professional (TIA Portal)	Yes
Languages	
Online languages	
• Number of online/runtime languages	5
Project languages	
• Languages per project	32
Functionality under WinCC (TIA Portal)	
Libraries	Yes
Applications/options	none
• Web browser	No
• SIMATIC WinCC Sm@rtServer	No
Task planner	
• time-controlled	No
• task-controlled	Yes
Message system	
• Number of alarm classes	32
• Bit messages	Yes
— Number of bit messages	200
• Analog messages	Yes
— Number of analog messages	15
• System messages HMI	Yes
• System messages, other (SIMATIC S7, Sinumerik, Simotion, etc.)	No
• Number of characters per message	80
• Number of process values per message	8
• Message indicator	Yes
• Message buffer	
— Number of entries	256

— Circulating buffer	Yes
— retentive	Yes
— maintenance-free	Yes
Recipe management	
• Number of recipes	5
• Data records per recipe	20
• Entries per data record	20
• Size of internal recipe memory	40 kbyte
• Recipe memory expandable	No
Variables	
• Number of variables per device	500
• Number of variables per screen	30
• Limit values	Yes
• Multiplexing	Yes
• Structures	No
• Arrays	Yes
Images	
• Number of configurable images	50
• Permanent window/default	Yes
• Global image	Yes
• Image selection by PLC	Yes
• Image number in the PLC	Yes
Image objects	
• Number of objects per image	30
• Text fields	Yes
• I/O fields	Yes
• Graphic I/O fields (graphics list)	Yes
• Symbolic I/O fields (text list)	Yes
• Date/time fields	Yes
• Switches	Yes
• Buttons	Yes
• Graphic display	Yes
• Icons	Yes
• Geometric objects	Yes
Complex image objects	
• Number of complex objects per screen	5
• Alarm view	Yes
• Trend view	Yes
• User view	Yes
• Status/control	No
• Sm@rtClient view	No

• Recipe view	Yes
• f(x) trend view	No
• System diagnostics view	No
• Media Player	No
• Bar graphs	Yes
• Sliders	No
• Pointer instruments	No
• Analog/digital clock	No
Lists	
• Number of text lists per project	150
• Number of entries per text list	30
• Number of graphics lists per project	100
• Number of entries per graphics list	30
Archiving	
• Number of archives per device	0
Security	
• Number of user groups	50
• Number of user rights	32
• Number of users	50
• Password export/import	No
• SIMATIC Logon	No
Character sets	
• Keyboard fonts	
— US English	Yes
Transfer (upload/download)	
• MPI/PROFIBUS DP	Yes
• USB	No
• Ethernet	No
• using external storage medium	No
Process coupling	
• S7-1200	Yes
• S7-1500	Yes
• S7-200	Yes
• S7-300/400	Yes
• LOGO!	Yes
• WinAC	Yes
• SINUMERIK	No
• SIMOTION	No
• Allen Bradley (EtherNet/IP)	No
• Allen Bradley (DF1)	Yes
• Mitsubishi (MC TCP/IP)	No

• Mitsubishi (FX)	Yes
• OMRON (FINS TCP)	No
• OMRON (LINK/Multilink)	Yes
• Modicon (Modbus TCP/IP)	No
• Modicon (Modbus)	Yes
Service tools/configuration aids	
• Backup/Restore manually	Yes
• Backup/Restore automatically	No
• Simulation	Yes
• Device switchover	Yes
Peripherals/Options	
Printer	No
SIMATIC HMI MM memory card: Multi Media Card	No
SIMATIC HMI SD memory card: Secure Digital memory card	No
USB memory	No
Mechanics/material	
Enclosure material (front)	
• Plastic	Yes
• Aluminum	No
• Stainless steel	No
Dimensions	
Width of the housing front	335 mm
Height of housing front	275 mm
Mounting cutout, width	310 mm
Mounting cutout, height	248 mm
Overall depth	60 mm
Weights	
Weight without packaging	2.65 kg
Weight incl. packaging	3.52 kg
last modified:	10/09/2020