



Electronic timing relay ON delay with semiconductor output 24-240 V AC/DC Time range 0.05...100 s can be snapped on at the front for contactors 3RT2 S00/S0 and auxiliary contactor 3RH2 S00 Spring-type terminal Varistor for attenuation of the contactor coils integrated

| | |
|---|--|
| product brand name | SIRIUS |
| product designation | function module |
| product type designation | 3RA28 |
| General technical data | |
| size of contactor can be combined company-specific | S00, S0 |
| product component semi-conductor output | Yes |
| product extension required remote control | No |
| product extension optional remote control | No |
| insulation voltage for overvoltage category III according to IEC 60664 with degree of pollution 3 rated value | 300 V |
| test voltage for isolation test | 1.5 kV |
| degree of pollution | 3 |
| surge voltage resistance rated value | 4 kV |
| test voltage for surge voltage test | 4 800 V |
| protection class IP of the terminal | IP20 |
| shock resistance acc. to IEC 60068-2-27 | 15g / 11 ms |
| vibration resistance acc. to IEC 60068-2-6 | 10 ... 59 Hz: 0.35 mm, 60 ... 150 Hz: 2g |
| mechanical service life (switching cycles) typical | 100 000 000 |
| electrical endurance (switching cycles) at AC-15 at 230 V typical | 10 000 000 |
| electrical endurance (switching cycles) <ul style="list-style-type: none"> • with contactor 3R.2 of frame size S00 • with contactor 3R.2 of frame size S0 | 10 000 000 10 000 000 |
| adjustable time | 0.05 ... 100 s |
| relative setting accuracy relating to full-scale value | 15 % |
| recovery time | 50 ms |
| reference code acc. to IEC 81346-2 | K |
| relative repeat accuracy | 1 % |
| Product Function | |
| product function star-delta circuit | No |
| Control circuit/ Control | |
| type of voltage of the control supply voltage | AC/DC |
| control supply voltage 1 at AC <ul style="list-style-type: none"> • at 50 Hz • at 60 Hz | 24 ... 240 V 24 ... 240 V |
| control supply voltage frequency 1 <ul style="list-style-type: none"> • control supply voltage 1 at DC | 50 ... 60 Hz 24 ... 240 V |
| operating range factor control supply voltage rated | |

| | |
|---|---------------|
| value at DC | |
| • initial value | 0.85 |
| • full-scale value | 1.1 |
| operating range factor control supply voltage rated value at AC at 50 Hz | |
| • initial value | 0.85 |
| • full-scale value | 1.1 |
| operating range factor control supply voltage rated value at AC at 60 Hz | |
| • initial value | 0.85 |
| • full-scale value | 1.1 |
| design of the surge suppressor | with varistor |
| Switching Function | |
| switching function | |
| • ON-delay | Yes |
| • ON-delay/instantaneous contact | No |
| • passing make contact | No |
| • passing make contact/instantaneous contact | No |
| • OFF delay | No |
| switching function | |
| • flashing symmetrically with interval start/instantaneous | No |
| • flashing symmetrically with interval start | No |
| • flashing symmetrically with pulse start/instantaneous | No |
| • flashing symmetrically with pulse start | No |
| • flashing asymmetrically with interval start | No |
| • flashing asymmetrically with pulse start | No |
| switching function | |
| • constant clock cycle with pulse start | No |
| • constant clock cycle with interval start | No |
| switching function | |
| • variably clocked with pulse start | No |
| • variably clocked with interval start | No |
| switching function | |
| • star-delta circuit with delay time | No |
| • star-delta circuit | No |
| switching function with control signal | |
| • additive ON-delay | No |
| • passing break contact | No |
| • passing break contact/instantaneous | No |
| • OFF delay | No |
| • OFF delay/instantaneous | No |
| • pulse delayed | No |
| • pulse delayed/instantaneous | No |
| • pulse-shaping | No |
| • pulse-shaping/instantaneous | No |
| • additive ON-delay/instantaneous | No |
| • ON-delay/OFF-delay | No |
| • ON-delay/OFF-delay/instantaneous | No |
| • passing make contact | No |
| • passing make contact/instantaneous contact | No |
| switching function of interval relay with control signal | |
| • retrotriggerable with deactivated control signal/instantaneous contact | No |
| • retrotriggerable with switched-on control signal | No |
| • retrotriggerable with switched-on control signal/instantaneous contact | No |
| • retriggerable with deactivated control signal | No |
| design of the control terminal non-floating | No |

| | |
|--|--|
| Auxiliary circuit | |
| number of NO contacts • delayed switching | 1 |
| operating frequency with 3RT2 contactor maximum | 2 500 1/h |
| influence of the surrounding temperature | ±1 % |
| power supply influence | ±1 % |
| Main circuit | |
| type of voltage | AC/DC |
| Inputs/ Outputs | |
| product function • non-volatile | No |
| Electromagnetic compatibility | |
| EMC immunity acc. to IEC 61812-1 | Environment A (industrial area) |
| conducted interference • due to burst acc. to IEC 61000-4-4 • due to conductor-earth surge acc. to IEC 61000-4-5 • due to conductor-conductor surge acc. to IEC 61000-4-5 | 2 kV network connection / 1 kV control connection 2 kV 1 kV |
| field-based interference acc. to IEC 61000-4-3 | 10 V/m |
| electrostatic discharge acc. to IEC 61000-4-2 | 8 kV |
| Safety related data | |
| touch protection against electrical shock | finger-safe |
| protection class IP on the front acc. to IEC 60529 | IP20 |
| type of insulation | Basic insulation |
| category acc. to EN 954-1 | none |
| Connections/ Terminals | |
| product function removable terminal for auxiliary and control circuit | Yes |
| type of electrical connection for auxiliary and control circuit | spring-loaded terminals |
| type of connectable conductor cross-sections • solid • finely stranded with core end processing • finely stranded without core end processing • at AWG cables solid • at AWG cables stranded | 0.5 ... 4 mm ² , 2x (0.5 ... 2.5 mm ²) 1x (0.5 ... 2.5 mm ²), 2x (0.5 ... 1.5 mm ²) 2x (0.5 ... 1.5 mm ²) 2x (20 ... 14) 2x (20 ... 14) |
| • connectable conductor cross-section solid • connectable conductor cross-section finely stranded with core end processing • connectable conductor cross-section finely stranded without core end processing | 0.5 ... 4 mm ² 0.5 ... 2.5 mm ² 0.25 ... 1.5 mm ² |
| • AWG number as coded connectable conductor cross section solid • AWG number as coded connectable conductor cross section stranded | 20 ... 14 20 ... 14 |
| Installation/ mounting/ dimensions | |
| mounting position | any (like contactor) |
| fastening method | clip-on |
| height | 38 mm |
| width | 45 mm |
| depth | 74 mm |
| required spacing • with side-by-side mounting — forwards — backwards — upwards — downwards — at the side • for grounded parts | 0 mm 0 mm 0 mm 0 mm 0 mm 0 mm |

| | |
|------------------|------|
| — forwards | 0 mm |
| — backwards | 0 mm |
| — upwards | 0 mm |
| — at the side | 0 mm |
| — downwards | 0 mm |
| • for live parts | |
| — forwards | 0 mm |
| — backwards | 0 mm |
| — upwards | 0 mm |
| — downwards | 0 mm |
| — at the side | 0 mm |

Ambient conditions

| | |
|---|----------------|
| installation altitude at height above sea level maximum | 2 000 m |
| • ambient temperature during operation | -25 ... +60 °C |
| • ambient temperature during storage | -40 ... +85 °C |
| • ambient temperature during transport | -40 ... +85 °C |
| relative humidity during operation | 0 ... 95 % |

Certificates/ approvals

| General Product Approval | Declaration of Conformity | Test Certificates |
|--------------------------|---------------------------|-------------------|
|--------------------------|---------------------------|-------------------|



[Miscellaneous](#)



[Type Test
Certificates/Test
Report](#)

[Special Test
Certificate](#)

Marine / Shipping



| Marine / Shipping | other | Railway |
|-------------------|-------|---------|
|-------------------|-------|---------|



[Confirmation](#)

[Vibration and Shock](#)

Further information

Information- and Downloadcenter (Catalogs, Brochures,...)

<https://www.siemens.com/ic10>

Industry Mall (Online ordering system)

<https://mall.industry.siemens.com/mall/en/en/Catalog/product?mlfb=3RA2811-2CW10>

Cax online generator

<http://support.automation.siemens.com/WW/CAXorder/default.aspx?lang=en&mlfb=3RA2811-2CW10>

Service&Support (Manuals, Certificates, Characteristics, FAQs,...)

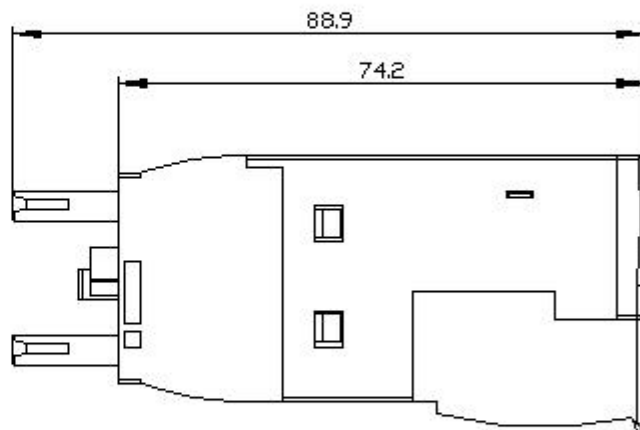
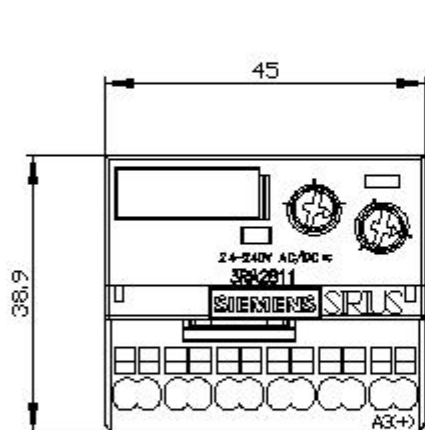
<https://support.industry.siemens.com/cs/ww/en/ps/3RA2811-2CW10>

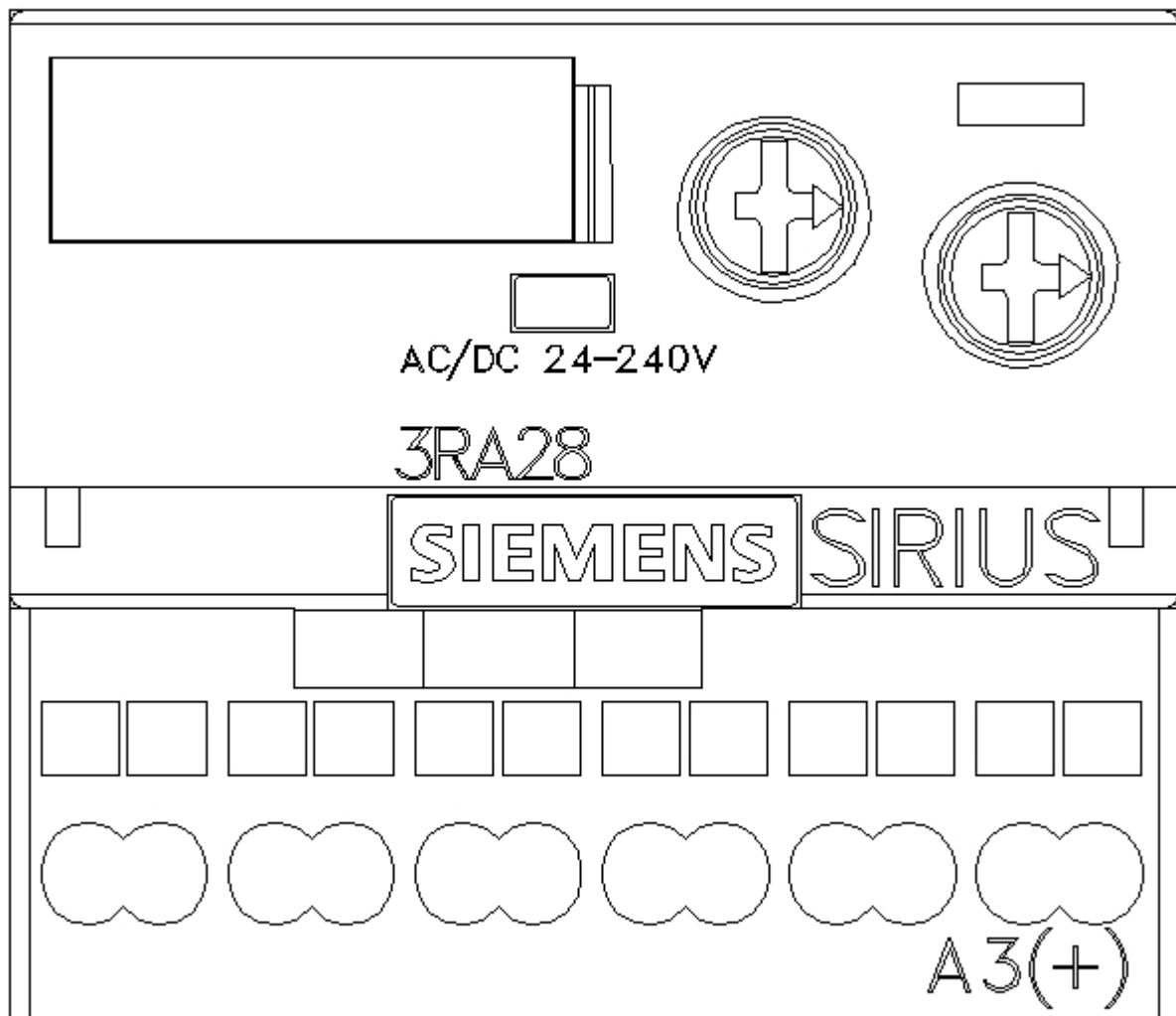
Image database (product images, 2D dimension drawings, 3D models, device circuit diagrams, EPLAN macros, ...)

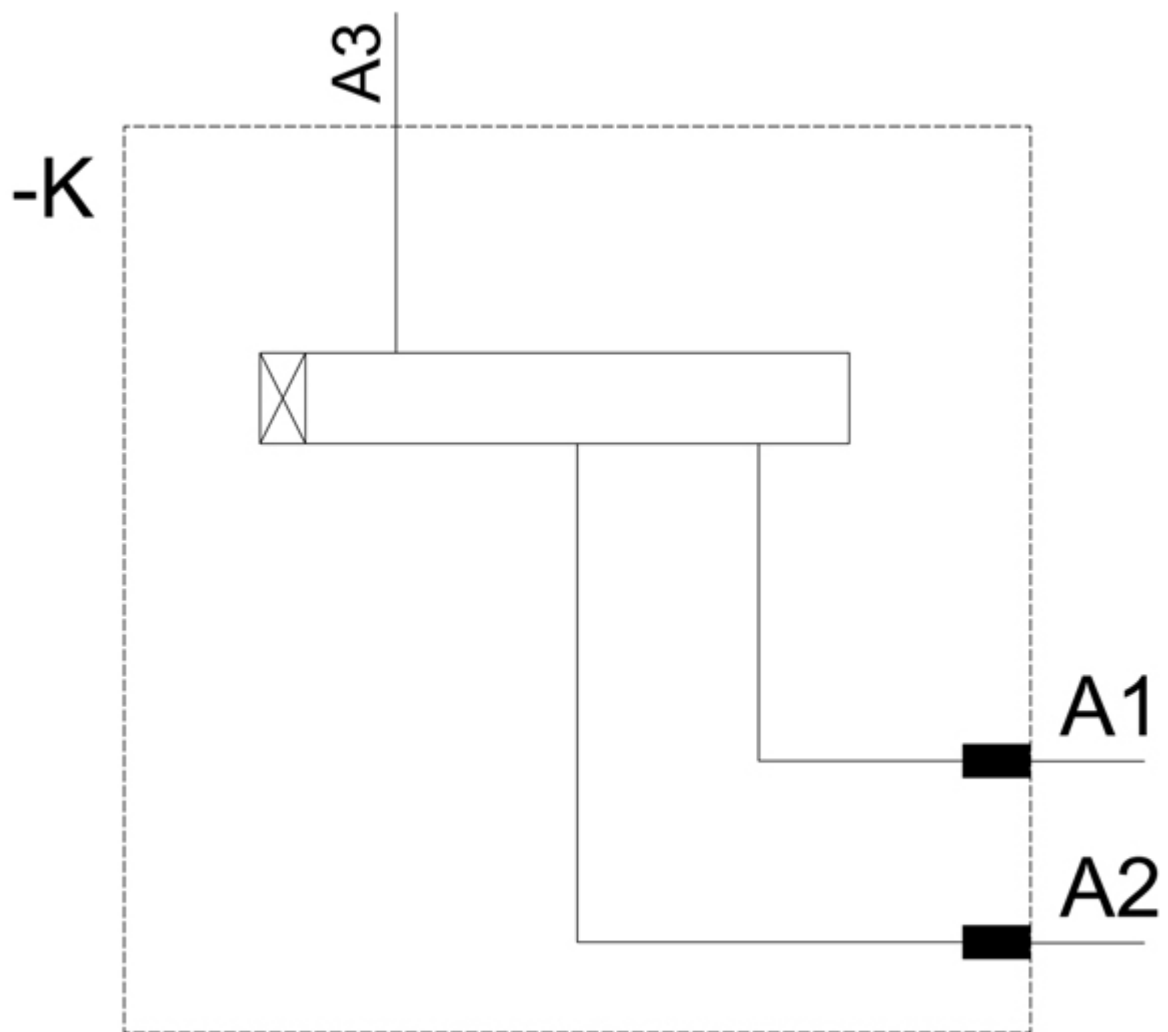
http://www.automation.siemens.com/bilddb/cax_de.aspx?mlfb=3RA2811-2CW10&lang=en

Characteristic: Derating

<https://support.industry.siemens.com/cs/ww/en/ps/3RA2811-2CW10/manual>







last modified:

12/19/2020 