



Circuit breaker size S0 for motor protection CLASS 10 A-release 3.5...5 A
Short-circuit release 65 A Screw terminal Standard switching capacity !!!
Phased-out product !!! Successor is SIRIUS 3RV2 Preferred successor
type is >>3RV2011-1FA10<<

product brand name	SIRIUS
product designation	circuit breaker
design of the product	for motor protection
General technical data	
product extension auxiliary switch	Yes
power loss [W] for rated value of the current	
• at AC in hot operating state	7.25 W
• at AC in hot operating state per pole	2.4 W
surge voltage resistance rated value	6 000 V
protection class IP on the front	IP20
shock resistance	25g / 11 ms
mechanical service life (switching cycles) of the main contacts typical	100 000
continuous current rated value	5 A
Ambient conditions	
installation altitude at height above sea level maximum	2 000 m
• ambient temperature during operation	-20 ... +60 °C
• ambient temperature during storage	-50 ... +80 °C
• ambient temperature during transport	-50 ... +80 °C
Main circuit	
number of poles for main current circuit	3
adjustable current response value current of the current-dependent overload release	3.5 ... 5 A
• operating voltage rated value	690 V
• operating voltage at AC-3 rated value maximum	690 V
operational current at AC-3 at 400 V rated value	5 A
operating power at AC-3	
• at 400 V rated value	1.5 kW
operating frequency at AC-3 maximum	15 1/h
Auxiliary circuit	
number of CO contacts for auxiliary contacts	0
Protective and monitoring functions	
product function	
• ground fault detection	No
• phase failure detection	Yes
trip class	CLASS 10
breaking capacity maximum short-circuit current (Icu)	

- at AC at 240 V rated value 100 kA
- at AC at 400 V rated value 100 kA
- at AC at 500 V rated value 100 kA
- at AC at 690 V rated value 6 kA

Short-circuit protection

design of the overcurrent release and short-circuit release thermomagnetic

Installation/ mounting/ dimensions

mounting position any

fastening method screw and snap-on mounting onto 35 mm standard mounting rail according to DIN EN 50022

height 97 mm

width 45 mm

depth 96 mm

required spacing with side-by-side mounting

- backwards 0 mm
- at the side 0 mm

Connections/ Terminals

product function removable terminal for auxiliary and control circuit No

type of electrical connection

- for main current circuit screw-type terminals
- for auxiliary and control circuit screw-type terminals

arrangement of electrical connectors for main current circuit front side

type of connectable conductor cross-sections

- for main contacts
 - solid 2x (1 ... 2.5 mm²), 2x (2.5 ... 6 mm²)
 - stranded 2x (1 ... 2.5 mm²), 2x (2.5 ... 6 mm²)
 - finely stranded with core end processing 2x (1 ... 2.5 mm²), 2x (2.5 ... 6 mm²)
- at AWG cables for main contacts 2x (14 ... 10)

Certificates/ approvals

General Product Approval

For use in hazardous locations



Declaration of Conformity

Test Certificates

Marine / Shipping



[Miscellaneous](#)

[Type Test Certificates/Test Report](#)

[Special Test Certificate](#)



Marine / Shipping

other

Railway



[Miscellaneous](#)

[Confirmation](#)



[Special Test Certificate](#)

Further information

Information- and Downloadcenter (Catalogs, Brochures,...)

<https://www.siemens.com/ic10>

Industry Mall (Online ordering system)

<https://mall.industry.siemens.com/mall/en/en/Catalog/product?mlfb=3RV1021-1FA10>

Cax online generator

<http://support.automation.siemens.com/WW/CAXorder/default.aspx?lang=en&mlfb=3RV1021-1FA10>

Service&Support (Manuals, Certificates, Characteristics, FAQs,...)

<https://support.industry.siemens.com/cs/ww/en/ps/3RV1021-1FA10>

Image database (product images, 2D dimension drawings, 3D models, device circuit diagrams, EPLAN macros, ...)

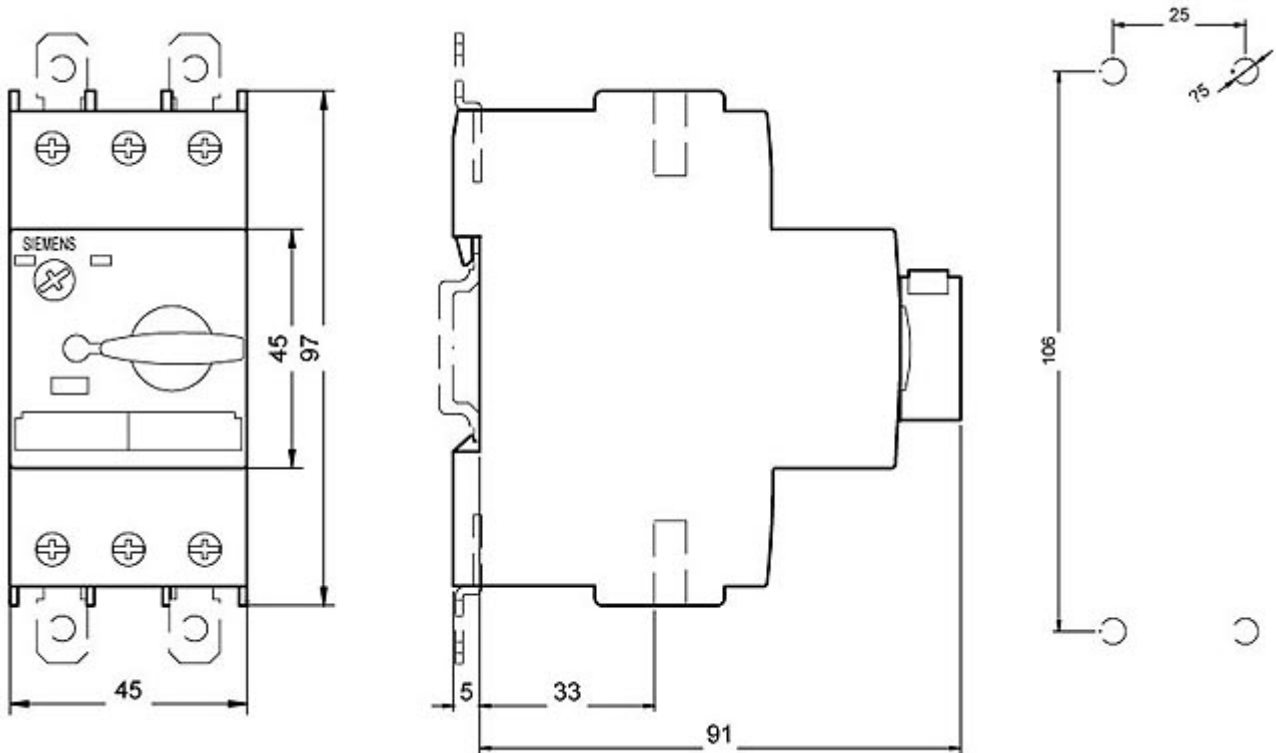
http://www.automation.siemens.com/bilddb/cax_de.aspx?mlfb=3RV1021-1FA10&lang=en

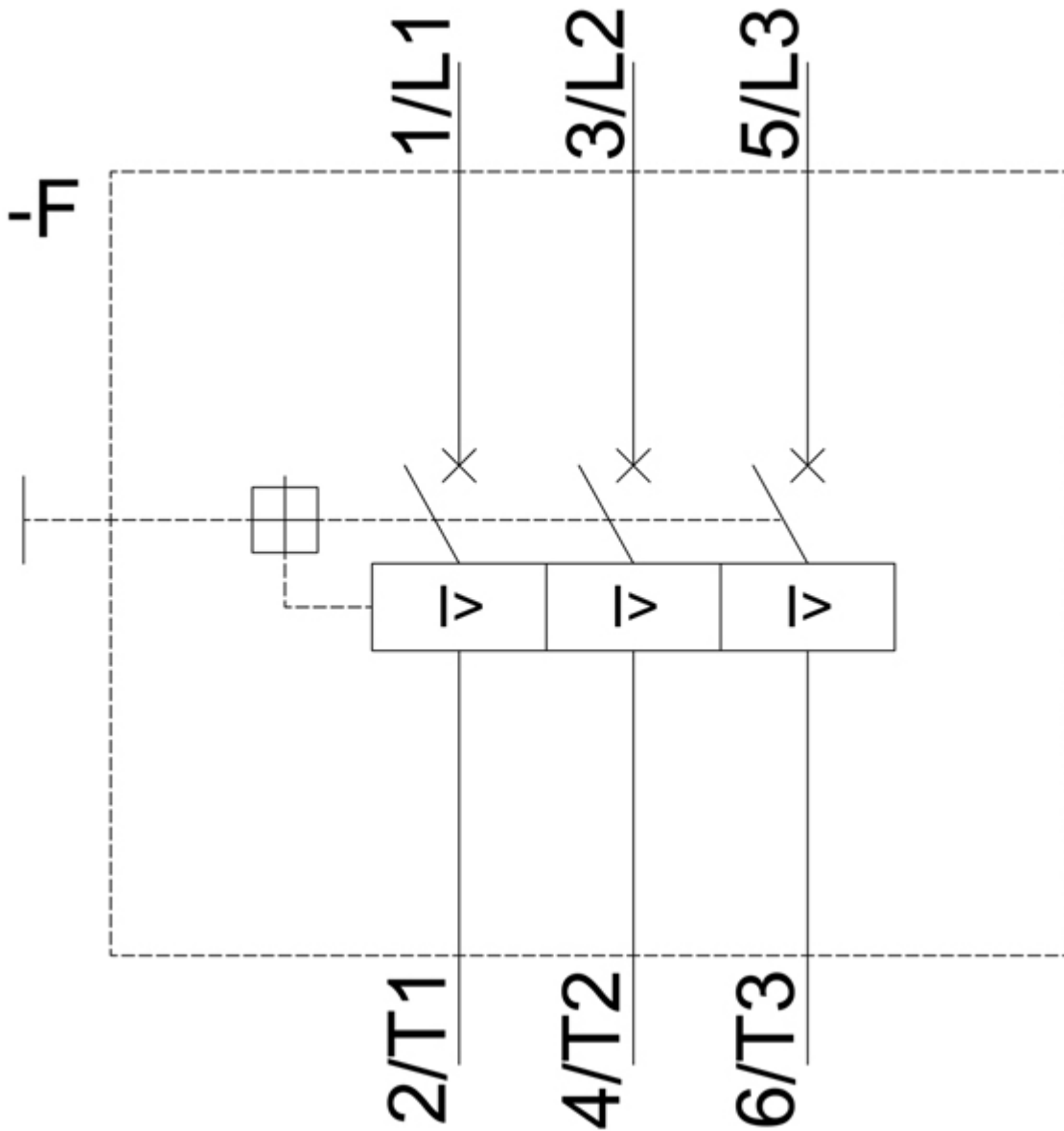
Characteristic: Tripping characteristics, I²t, Let-through current

<https://support.industry.siemens.com/cs/ww/en/ps/3RV1021-1FA10/char>

Further characteristics (e.g. electrical endurance, switching frequency)

<http://www.automation.siemens.com/bilddb/index.aspx?view=Search&mlfb=3RV1021-1FA10&objecttype=14&gridview=view1>





last modified:

5/15/2020 