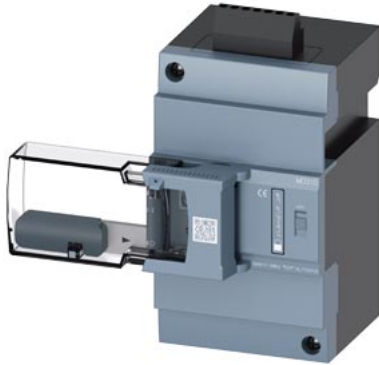


side mounted motor operator 110-250V AC/DC accessory for: 3VA1 160



| Model | |
|---|---------------------------------------|
| product brand name | SETRON |
| product designation | Accessories |
| Product version | Lateral motorized operating mechanism |
| General technical data | |
| Voltage | |
| Type de tension pour la commande | AC/DC |
| <ul style="list-style-type: none"> Rated control supply voltage U_s at AC 50 Hz | 110 V |
| <ul style="list-style-type: none"> Rated control supply voltage U_s at AC 50 Hz | 230 V |
| <ul style="list-style-type: none"> Rated control supply voltage U_s at AC 60 Hz | 110 V |
| <ul style="list-style-type: none"> Rated control supply voltage U_s at AC 60 Hz | 230 V |
| Rated operational power | 250 V·A |
| Current | |
| Mechanical Design | |
| Rated control supply voltage U_s with DC | 110 V |
| Height | 149 mm |
| Width | 78.3 mm |
| depth | 93.8 mm |
| connectable conductor cross-section / solid | |
| <ul style="list-style-type: none"> minimum | 1.5 mm ² |
| <ul style="list-style-type: none"> maximum | 2.5 mm ² |
| connectable conductor cross-section / finely stranded / with core end processing | |
| <ul style="list-style-type: none"> minimum | 1.5 mm ² |
| <ul style="list-style-type: none"> maximum | 2.5 mm ² |
| connectable conductor cross-section / stranded | |
| <ul style="list-style-type: none"> minimum | 1.5 mm ² |
| <ul style="list-style-type: none"> maximum | 2.5 mm ² |
| ambient temperature / during operation | |
| <ul style="list-style-type: none"> minimum | -25 °C |
| <ul style="list-style-type: none"> maximum | 70 °C |
| ambient temperature / during storage | |
| <ul style="list-style-type: none"> minimum | -40 ... +80 |
| <ul style="list-style-type: none"> maximum | |
| tightening torque | |
| <ul style="list-style-type: none"> minimum | 0.36 N·m |
| <ul style="list-style-type: none"> maximum | 0.44 N·m |



Connections according IEC


stripped length

7 mm

Connections according UL

Certificates

| General Product Approval | EMC | Declaration of Conformity | Test Certificates |
|--|---|--|---|
|  VDE |  |  RCM |  EG-Konf. |
| Miscellaneous | | | Type Test Certificates/Test Report |

| Test Certificates | Shipping Approval | other |
|--|--|--|
| Type Test Certificates/Test Report |  LRS | Manufacturer Declaration |
| Type Test Certificates/Test Report | | Miscellaneous |

Further information

Information- and Downloadcenter (Catalogs, Brochures,...)

<http://www.siemens.com/lowvoltage/catalogs>

Industry Mall (Online ordering system)

<https://mall.industry.siemens.com/mall/en/en/Catalog/product?mlfb=3VA9117-0HB20>

Service&Support (Manuals, Certificates, Characteristics, FAQs,...)

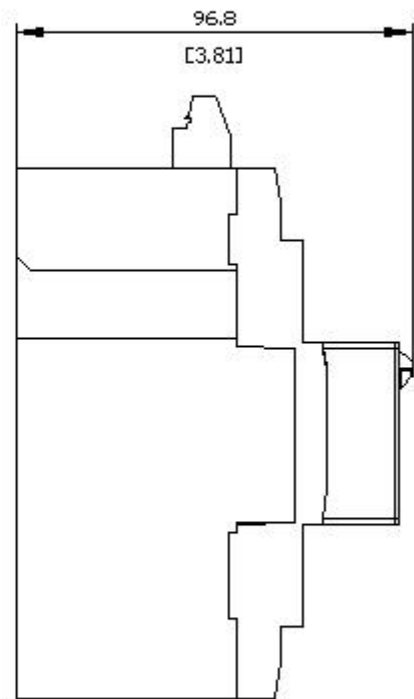
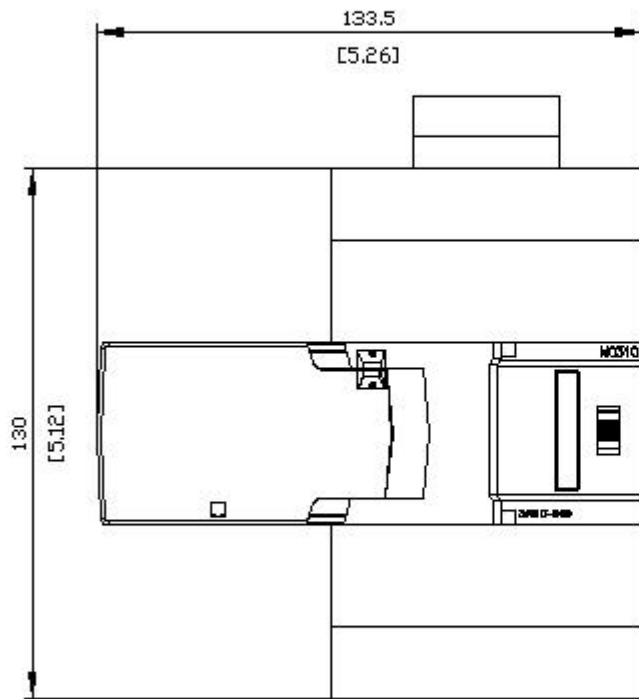
<https://support.industry.siemens.com/cs/ww/en/ps/3VA9117-0HB20>

Image database (product images, 2D dimension drawings, 3D models, device circuit diagrams, ...)

http://www.automation.siemens.com/bilddb/cax_en.aspx?mlfb=3VA9117-0HB20

Tender specifications

<http://www.siemens.com/specifications>



last modified:

12/18/2020 