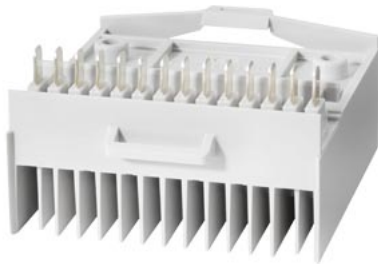


accessories circuit breaker 3WL wiper contact module f. withdrawable circ.breaker



**Model**

|                       |  |
|-----------------------|--|
| product brand name    | SENTRON                                  |
| design of the product | Sliding contact modules for guide frames |

**Accessories**

|             |       |
|-------------|-------|
| accessories | Other |
|-------------|-------|

|                          |     |                           |                   |       |
|--------------------------|-----|---------------------------|-------------------|-------|
| General Product Approval | EMC | Declaration of Conformity | Test Certificates | other |
|--------------------------|-----|---------------------------|-------------------|-------|



[Miscellaneous](#)

[Manufacturer Declaration](#)

[Environmental Conformations](#)

**other**

[Miscellaneous](#)

**Further information**

Information- and Downloadcenter (Catalogs, Brochures,...)

<http://www.siemens.com/lowvoltage/catalogs>

Industry Mall (Online ordering system)

<https://mall.industry.siemens.com/mall/en/en/Catalog/product?mlfb=3WL9111-0AB08-0AA0>

Service&Support (Manuals, Certificates, Characteristics, FAQs,...)

<https://support.industry.siemens.com/cs/ww/en/ps/3WL9111-0AB08-0AA0>

Image database (product images, 2D dimension drawings, 3D models, device circuit diagrams, ...)

[http://www.automation.siemens.com/bilddb/cax\\_en.aspx?mlfb=3WL9111-0AB08-0AA0](http://www.automation.siemens.com/bilddb/cax_en.aspx?mlfb=3WL9111-0AB08-0AA0)

CAX-Online-Generator

<http://www.siemens.com/cax>

Tender specifications

<http://www.siemens.com/specifications>

