

fixed-mounted circuit breaker 4-pole, size II, IEC In=4000A to 690V,  
AC50/60Hz Icu=100kA at 500V rear connection vertical

| Model  |  |
|--|--|
| product brand name   | SENTRON  |
| product designation  | ACB  |
| design of the product  | IEC 60947-2  |
| design of the actuating element  | Pushbutton   |
| type of the driving mechanism  | Manual operating mechanism with mechanical closing |
| type of the driving mechanism / motor drive                                  | No   |
| design of the overcurrent release  | ETU25B   |
| General technical data   |  |
| number of poles  | 4  |
| size of the circuit-breaker  | 2  |
| utilization category   | B  |
| circuit-breaker / Design   | 3WL1   |
| Voltage  |  |
| Rated insulation voltage Ui  | 1 000 V  |
| insulation voltage / rated value   | 1 000 V  |
| operating voltage  |  |
| • at AC / at 50/60 Hz / rated value  | 690 V  |
| Protection class   |  |
| protection class IP  | IP20   |
| protection class IP / on the front   | IP20   |
| protection function of the overcurrent release                               | LSI  |
| Dissipation  |  |
| power loss [W]   |  |
| • for rated value of the current / at AC / in hot operating state / per pole | 250 W  |
| • maximum  | 750 W  |
| Current  |  |
| continuous current / rated value / maximum                                   | 4 000 A  |
| continuous current / rated value   | 4 000 A  |
| adjustable current response value current                                    |  |
| • of the current-dependent overload release / full-scale value               | 4 000 A  |
| • of instantaneous short-circuit trip unit / initial value                   | 50 000 A   |
| • of instantaneous short-circuit trip unit / full-scale value                | 50 000 A   |
| Main circuit   |  |
| operating frequency  |  |
| • 1 / rated value  | 50 Hz  |
| • 2 / rated value  | 60 Hz  |
| operational current  |  |
| • at 40 °C / rated value   | 4 000 A  |
| • at 50 °C / rated value   | 3 950 A  |
| • at 55 °C / rated value   | 3 950 A  |
| • at 60 °C / rated value   | 3 810 A  |
| • at 65 °C / rated value   | 3 810 A  |
| • at 70 °C / rated value   | 3 600 A  |
| Auxiliary circuit  |  |

|   |                                    |
|---|------------------------------------|
| number of NC contacts / for auxiliary contacts  | 2                                  |
| number of NO contacts / for auxiliary contacts  | 2                                  |
| <b>Suitability</b>  |                                    |
| suitability for use   | Plant / motor protection           |
| <b>Adjustable parameters</b>  |                                    |
| adjustable current response value current / of the current-dependent overload release / initial value | 1 600 A                            |
| <b>Product details</b>  |                                    |
| product component   |                                    |
| • trip indicator  | Yes                                |
| • voltage trigger   | No                                 |
| • undervoltage release  | No                                 |
| design of the auxiliary switch  | 2 NO + 2 NC                        |
| product extension / optional / motor drive  | Yes                                |
| <b>Product function</b>   |                                    |
| product function  |                                    |
| • grounding protection  | No                                 |
| • phase failure detection   | Yes                                |
| <b>Display and operation</b>  |                                    |
| display version   | without display                    |
| <b>Short circuit</b>  |                                    |
| breaking capacity operating short-circuit current (Ics)   |                                    |
| • at 415 V / rated value  | 100 kA                             |
| • at 500 V / rated value  | 100 kA                             |
| • at 690 V / rated value  | 85 kA                              |
| • breaking capacity maximum short-circuit current (Icu) / at 415 V / rated value                      | 100 kA                             |
| • breaking capacity maximum short-circuit current (Icu) / at 500 V / rated value                      | 100 kA                             |
| • breaking capacity maximum short-circuit current (Icu) / at 690 V / rated value                      | 85 kA                              |
| <b>Connections</b>  |                                    |
| arrangement of electrical connectors / for main current circuit                                       | Main terminal on the rear vertical |
| type of electrical connection / for main current circuit  | busbar connection                  |
| <b>Mechanical Design</b>  |                                    |
| height  | 440.5 mm                           |
| width   | 590 mm                             |
| depth   | 419 mm                             |
| fastening method  | fixed mounting                     |
| <b>Environmental conditions</b>   |                                    |
| ambient temperature / during operation  |                                    |
| • minimum   | -20 °C                             |
| • maximum   | 70 °C                              |
| ambient temperature / during storage  |                                    |
| • minimum   | -40 °C                             |
| • maximum   | 70 °C                              |
| <b>Certificates</b>   |                                    |
| reference code  |                                    |
| • acc. to DIN EN 61346-2  | Q                                  |
| • acc. to IEC 81346-2   | Q                                  |

**Further information**

**Industry Mall (Online ordering system)**

<https://mall.industry.siemens.com/mall/en/en/Catalog/product?mlfb=3WL1240-4CB41-1AA2>

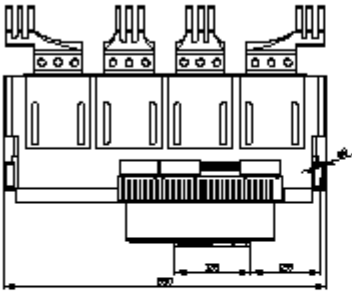
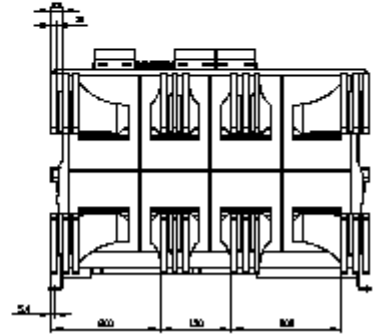
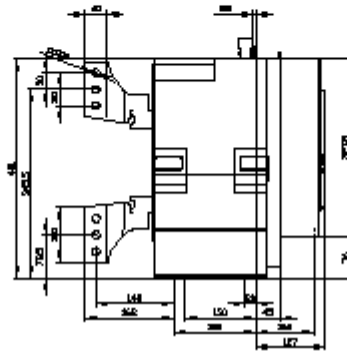
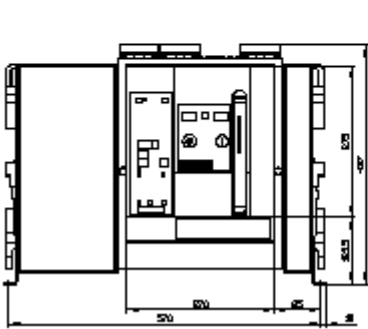
**Service&Support (Manuals, Certificates, Characteristics, FAQs,...)**

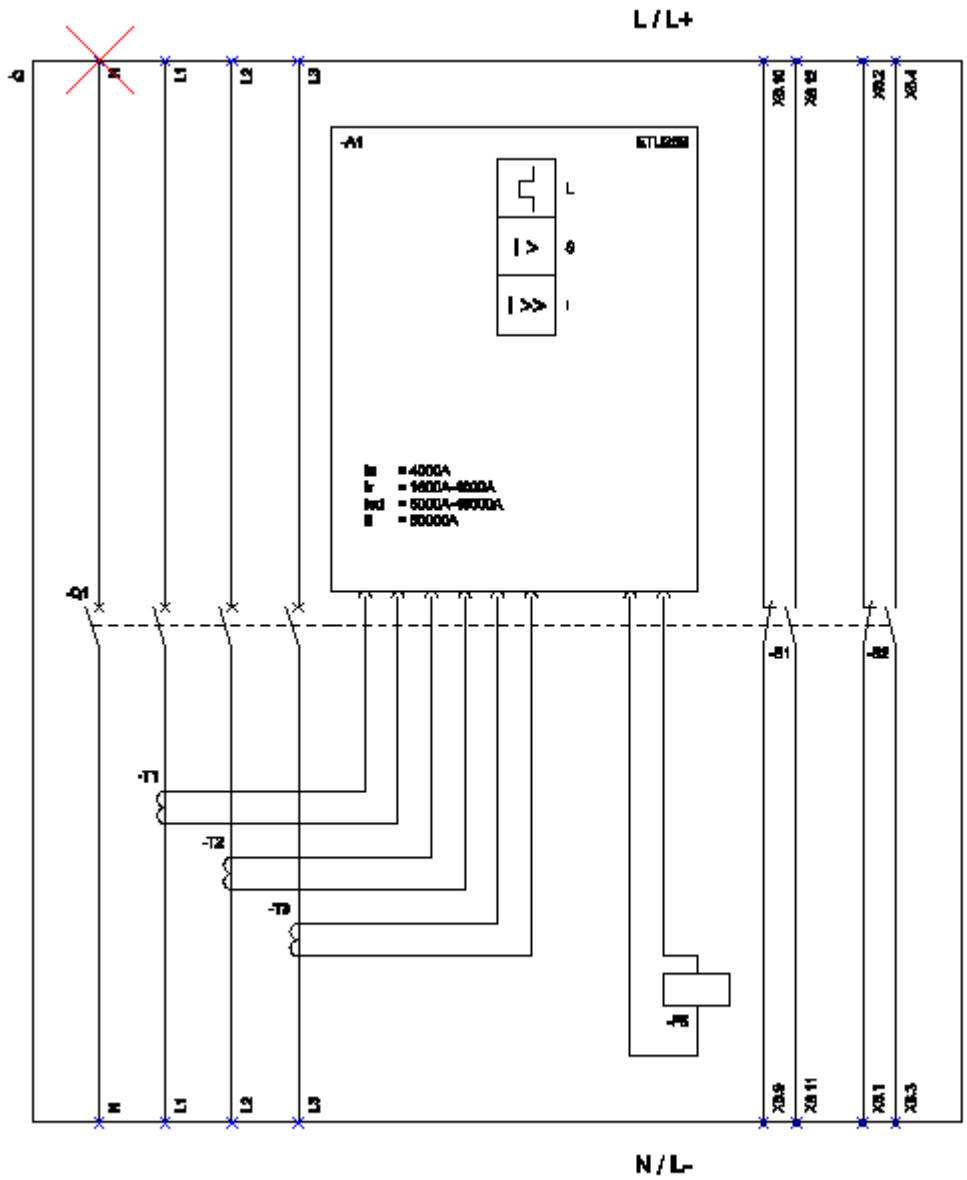
<https://support.industry.siemens.com/cs/ww/en/ps/3WL1240-4CB41-1AA2>

**Image database (product images, 2D dimension drawings, 3D models, device circuit diagrams, ...)**

[http://www.automation.siemens.com/bilddb/cax\\_en.aspx?mlfb=3WL1240-4CB41-1AA2](http://www.automation.siemens.com/bilddb/cax_en.aspx?mlfb=3WL1240-4CB41-1AA2)

**Tender specifications**





I (Long Time Delay / Überlastschutz); S (Short Time Delay / Kurzschlusschutz, Inzweitverzögerung);  
 I (Instantaneous / Kurzschlusschutz, unverzögert); F5 (Maglatch for trip unit / Auslöse magnet); S1 - S4 (Auxiliary switch / Hilfschalter);

last modified:

3/8/2020