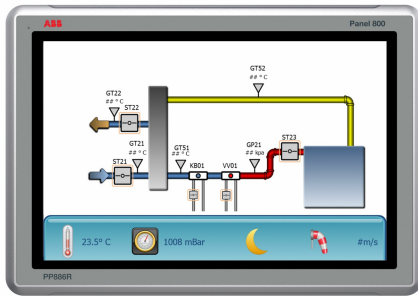


# PP886R

## System 800xA hardware selector



Touchscreen panels with brilliant TFT/LED display colors and multi-protocol connectivity. The rugged range of Panel 800 comprises of PP886R, PP887H and PP887S that are easy-to use HMI with comprehensive and integrated templates and libraries for every conceivable process you need. All rugged panels are equipped with high-resolution graphics in TFT/LED display. Most models offer wide screen, high resolution display for increased efficiency and excellent operator interaction.

### Features and benefits

- Easy to use**  
 A fully deployable HMI with comprehensive and integrated templates and libraries for every conceivable process. The Panel Builder tool, with familiar Microsoft® Windows® environment along with multiple language support results in quick, easy and efficient engineering.
- State-of-the-arts graphics**  
 Vector-based, high-resolution graphics in TFL/LED display, with icon-based interface, navigation and control.
- Robust and reliable**  
 Panel 800 is constructed in a strong yet lightweight diecast, powder-coated aluminum housing. Front casing withstands wet, dusty and demanding environments. Operating temperatures ranging between -30° C to + 70° C with maximum 95% humidity.
- Truly open platform**  
 Built on open architecture and technologies that accompany the .NET framework, these panels are capable of multi-brand controller connectivity. A multitude of connection options are available for local communication, expansion, remote access and more.
- Try your application before you use it**  
 Nice possibility to simulate and run the application directly from the Panel Builder 800 before you use it.

<b>General info</b>	
Article number	3BSE092985R1
Category	Rugged
Display type	Touch
Display size	15.4"
Brightness	450 cd/m <sup>2</sup>
Display resolution, ratio	1280 x 800 pixels
Processor	ARM9 (800 MHz)
Main memory	1 GB
External storage media	1 x SD card slot (or SDHC with latest image loaded)
Dimension WxHxD (mm)	410 x 286 x 73 mm
Power supply	24 V DC (18 to 32 VDC)
Operating temperature	-30 °C to +70 °C

<b>Detailed data</b>	
Dimming	Marine optimized dimming down to 0.5 cd/m <sup>2</sup>
Interaction type	Resistive touch
Realtime clock	Yes
Ethernet (shielded RJ 45)	1 x 10/100 Base-T
USB	2 x USB 2.0, max 500 mA
Serial port	1 x RS232, 1 x RS422/485

<b>Environment and certification</b>	
Frame material, front foil	Gray powder-coated aluminum
Power consumption	18 W
Protection (front/rear)	Front IP66, NEMA 4X/12 and UL Type 4X/12. Rear IP20
Relative operating humidity	5 % – 95 % non-condensed
Storage temperature	-40 °C to +80 °C
Vibration and shock	4 G / 40 G
CE-marking	CE, FCC, KCC
UL	UL 61010-2-201, UL50E Type 4X, Type 12
Marine	DNV, KR, GL, LR, ABS, CCS
Hazardous	UL/cULC1D2, ATEX (Zone2, Zone22), IECEx (Zone2, Zone22)
RoHS compliance	DIRECTIVE/2011/65/EU
WEEE compliance	DIRECTIVE/2012/19/EU

<b>Dimensions</b>	
Weight	4.1 kg
Dimension WxHxD (mm)	410 x 286 x 73 mm
Cut-out dimension WxH (mm)	394 x 270 mm
Mounting depth mm. (Including clearance)	66 (166) mm
Mounting	Panel Mount

[solutions.abb/800xA](https://solutions.abb/800xA)  
[solutions.abb/controlsystems](https://solutions.abb/controlsystems)

800xA is a registered or pending trademark of ABB. All rights to other trademarks reside with their respective owners.

We reserve the right to make technical changes to the products or modify the contents of this document without prior notice. With regard to purchase orders, the agreed particulars shall prevail. ABB does not assume any responsibility for any errors or incomplete information in this document.

We reserve all rights to this document and the items and images it contains. The reproduction, disclosure to third parties or the use of the content of this document – including parts thereof – are prohibited without ABB's prior written permission.

Copyright© 2022 ABB All rights reserved