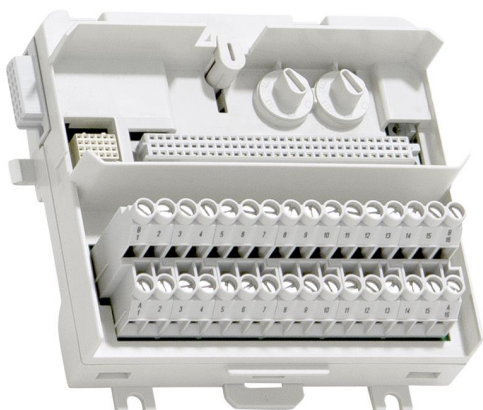


TU851

System 800xA hardware selector



The TU851 MTU can have up to 16 I/O channels. The maximum rated voltage is 250 V and maximum rated current is 3 A per channel. The MTU distributes the ModuleBus to the I/O module and to the next MTU. It also generates the correct address to the I/O module by shifting the outgoing position signals to the next MTU.

The MTU can be mounted on a standard DIN rail. It has a mechanical latch that locks the MTU to the DIN rail.

Two mechanical keys are used to configure the MTU for different types of I/O modules. This is only a mechanical configuration and it does not affect the functionality of the MTU or the I/O module. Each key has six positions, which gives a total number of 36 different configurations.

Features and benefits

- Up to 16 isolated channels of field signals.
- Connections to ModuleBus and I/O modules.
- Mechanical keying prevents insertion of the wrong I/O module.
- Latching device to DIN rail for grounding.
- DIN rail mounting.

General info	
Article number	3BSE068782R1
Type	Extended
Connection	Terminal block
Channels	16
Voltage	250 V
Mounting	Both directions
Mounting detail	55 ° (131 °F)
Use with I/O	DI820, DI821, DI825, DI828, DO820, DO821, and DO828
Process connections	32 up to 16 I/O channels
Single/redundant I/O	Single

Detailed data	
Maximum current per I/O channel	3 A
Acceptable wire sizes	Solid: 0.2 - 4mm ² Stranded: 0.2 - 4 mm ² , 24 - 10 AWG
Dielectric test voltage	2000 V a.c.

Environment and certification

CE mark	Yes
Electrical safety	IEC 61131-2, UL 61010-1, UL 61010-2-201
Hazardous Location	-
Marine certification	ABS, BV, DNV-GL, LR
Protection rating	IP20 according to IEC 60529
Corrosive atmosphere ISA-S71.04	G3
Climatic operating conditions	0 to +55 °C (Storage -40 to +70 °C), RH=5 to 95 % no condensation, IEC/EN 61131-2
Pollution degree	Degree 2, IEC 60664-1
Mechanical operating conditions	IEC/EN 61131-2
EMC	EN 61000-6-4, EN 61000-6-2
Overvoltage categories	IEC/EN 60664-1, EN 50178
Equipment class	Class I according to IEC 61140; (earth protected)
RoHS compliance	EN 50581:2012
WEEE compliance	DIRECTIVE/2012/19/EU

Dimensions

Width	126 mm (5 in.) including connector, 120.5 mm (4.74 in.) edge to edge installed
Depth	64 mm (2.52 in.) including terminals
Height	110 mm (4.3 in.)
Weight	0.22 kg (0.48 lbs)

solutions.abb/800xA
solutions.abb/controlsystems

800xA is a registered or pending trademark of ABB. All rights to other trademarks reside with their respective owners.

We reserve the right to make technical changes to the products or modify the contents of this document without prior notice. With regard to purchase orders, the agreed particulars shall prevail. ABB does not assume any responsibility for any errors or incomplete information in this document.

We reserve all rights to this document and the items and images it contains. The reproduction, disclosure to third parties or the use of the content of this document – including parts thereof – are prohibited without ABB's prior written permission.

Copyright© 2022 ABB All rights reserved