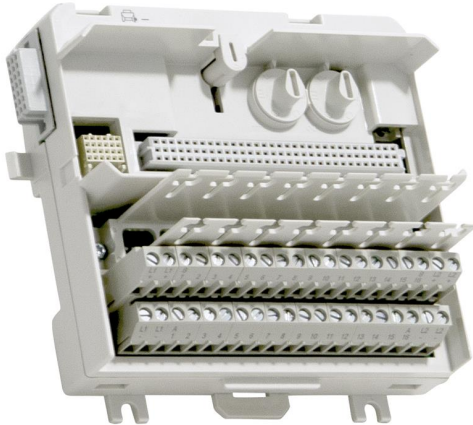


TU834

System 800xA hardware selector



The TU834 MTU can have up to 8 I/O channels and 2+2 process voltage connections. Each channel has two I/O connections and one ZP connection. Input signals are connected via individual shunt sticks, TY801. The maximum rated voltage is 50 V and maximum rated current is 2 A per channel. The MTU distributes the ModuleBus to the next MTU. It also generates the correct address to the I/O modules by shifting the outgoing position signals to the next MTU.

The MTU can be mounted on a standard DIN rail. It has a mechanical latch that locks the MTU to the DIN rail.

Features and benefits

- Complete installation of I/O modules using 2-wire connections and field power distribution.
- Up to 8 channels of field signals and process power connections.
- Mechanical keying prevents insertion of the wrong I/O module.
- Latching device to DIN rail for grounding.
- DIN rail mounting.
- Include 8 individual shunt sticks.

General info	
Article number	3BSE040364R1
Type	Extended
Connection	Terminal block
Channels	8
Voltage	50 V
Mounting	Both directions
Mounting detail	55 °C (131 °F)
Use with I/O	AI880 and AI880A
Process connections	40 up to 8 I/O channels (2 terminals per channel) 4 Process power 20 Process power (0 V)
Single/redundant I/O	Single

Detailed data

Maximum current per I/O channel	2 A
Maximum current process connection	5 A
Acceptable wire sizes	Solid: 0.2 - 4 mm ² Stranded: 0.2 - 2.5 mm ² , 24 - 12 AWG Recommended torque: 0.5 - 0.6 Nm Stripping length: 7 mm
Dielectric test voltage	500 V a.c.

Environment and certification

CE mark	Yes
Electrical safety	IEC 61131-2, UL 61010-1, UL 61010-2-201
Hazardous Location	C1 Div 2 cULus, C1 Zone 2 cULus, ATEX Zone 2
Marine certification	ABS, BV, DNV-GL, LR
Protection rating	IP20 according to IEC 60529
Corrosive atmosphere ISA-S71.04	G3
Climatic operating conditions	0 to +55 °C (Storage -40 to +70 °C), RH=5 to 95 % no condensation, IEC/EN 61131-2
Pollution degree	Degree 2, IEC 60664-1
Mechanical operating conditions	IEC/EN 61131-2
EMC	EN 61000-6-4, EN 61000-6-2
Overvoltage categories	IEC/EN 60664-1, EN 50178
Equipment class	Class I according to IEC 61140; (earth protected)
RoHS compliance	EN 50581:2012
WEEE compliance	DIRECTIVE/2012/19/EU

Dimensions

Width	126 mm (5.0 in.) including connector, 120.5 mm (4.74 in.) edge to edge installed
Depth	64 mm (2.52 in.) including terminals
Height	110 mm (4.3 in.) including locking device
Weight	0.28 kg (0.6 lbs)

solutions.abb/800xA
solutions.abb/controlsystems

800xA is a registered or pending trademark of ABB. All rights to other trademarks reside with their respective owners.

We reserve the right to make technical changes to the products or modify the contents of this document without prior notice. With regard to purchase orders, the agreed particulars shall prevail. ABB does not assume any responsibility for any errors or incomplete information in this document.

We reserve all rights to this document and the items and images it contains. The reproduction, disclosure to third parties or the use of the content of this document – including parts thereof – are prohibited without ABB's prior written permission.

Copyright© 2022 ABB All rights reserved