



Circuit breaker size S0 for motor protection CLASS 10 A-release 0.7 ...1 A  
Short-circuit release 13 A Screw terminal Standard switching capacity !!!  
Phased-out product !!! Successor is SIRIUS 3RV2 Preferred successor  
type is >>3RV2011-0JA10<<

<b>product brand name</b>	SIRIUS
<b>product designation</b>	circuit breaker
<b>design of the product</b>	for motor protection
<b>General technical data</b>	
product extension auxiliary switch	Yes
<b>power loss [W] for rated value of the current</b>	
• at AC in hot operating state	7.25 W
• at AC in hot operating state per pole	2.4 W
<b>surge voltage resistance rated value</b>	6 000 V
protection class IP on the front	IP20
<b>shock resistance</b>	25g / 11 ms
mechanical service life (switching cycles) of the main contacts typical	100 000
<b>continuous current rated value</b>	1 A
<b>Ambient conditions</b>	
installation altitude at height above sea level maximum	2 000 m
• ambient temperature during operation	-20 ... +60 °C
• ambient temperature during storage	-50 ... +80 °C
• ambient temperature during transport	-50 ... +80 °C
<b>Main circuit</b>	
<b>number of poles for main current circuit</b>	3
<b>adjustable current response value current of the current-dependent overload release</b>	0.7 ... 1 A
• operating voltage rated value	690 V
• operating voltage at AC-3 rated value maximum	690 V
operational current at AC-3 at 400 V rated value	1 A
operating power at AC-3	
• at 400 V rated value	0.25 kW
operating frequency at AC-3 maximum	15 1/h
<b>Auxiliary circuit</b>	
number of CO contacts for auxiliary contacts	0
<b>Protective and monitoring functions</b>	
<b>product function</b>	
• ground fault detection	No
• phase failure detection	Yes
<b>trip class</b>	CLASS 10
<b>breaking capacity maximum short-circuit current (Icu)</b>	

- at AC at 240 V rated value 100 kA
- at AC at 400 V rated value 100 kA
- at AC at 500 V rated value 100 kA
- at AC at 690 V rated value 100 kA

#### Short-circuit protection

**design of the overcurrent release and short-circuit release** thermomagnetic

#### Installation/ mounting/ dimensions

**mounting position** any

**fastening method** screw and snap-on mounting onto 35 mm standard mounting rail according to DIN EN 50022

**height** 97 mm

**width** 45 mm

**depth** 96 mm

required spacing with side-by-side mounting

- backwards 0 mm
- at the side 0 mm

#### Connections/ Terminals

product function removable terminal for auxiliary and control circuit No

**type of electrical connection**

- for main current circuit screw-type terminals
- for auxiliary and control circuit screw-type terminals

**arrangement of electrical connectors for main current circuit** front side

**type of connectable conductor cross-sections**

- for main contacts
  - solid 2x (1 ... 2.5 mm<sup>2</sup>), 2x (2.5 ... 6 mm<sup>2</sup>)
  - stranded 2x (1 ... 2.5 mm<sup>2</sup>), 2x (2.5 ... 6 mm<sup>2</sup>)
  - finely stranded with core end processing 2x (1 ... 2.5 mm<sup>2</sup>), 2x (2.5 ... 6 mm<sup>2</sup>)
- at AWG cables for main contacts 2x (14 ... 10)

#### Certificates/ approvals

General Product Approval

For use in hazardous locations



Declaration of Conformity

Test Certificates

Marine / Shipping



[Miscellaneous](#)

[Special Test Certificate](#)

[Type Test Certificates/Test Report](#)



Marine / Shipping

other

Railway



[Miscellaneous](#)

[Confirmation](#)



[Special Test Certificate](#)

#### Further information

Information- and Downloadcenter (Catalogs, Brochures,...)

<https://www.siemens.com/ic10>

Industry Mall (Online ordering system)

<https://mall.industry.siemens.com/mall/en/en/Catalog/product?mlfb=3RV1021-0JA10>

Cax online generator

<http://support.automation.siemens.com/WW/CAXorder/default.aspx?lang=en&mlfb=3RV1021-0JA10>

Service&Support (Manuals, Certificates, Characteristics, FAQs,...)

<https://support.industry.siemens.com/cs/ww/en/ps/3RV1021-0JA10>

Image database (product images, 2D dimension drawings, 3D models, device circuit diagrams, EPLAN macros, ...)

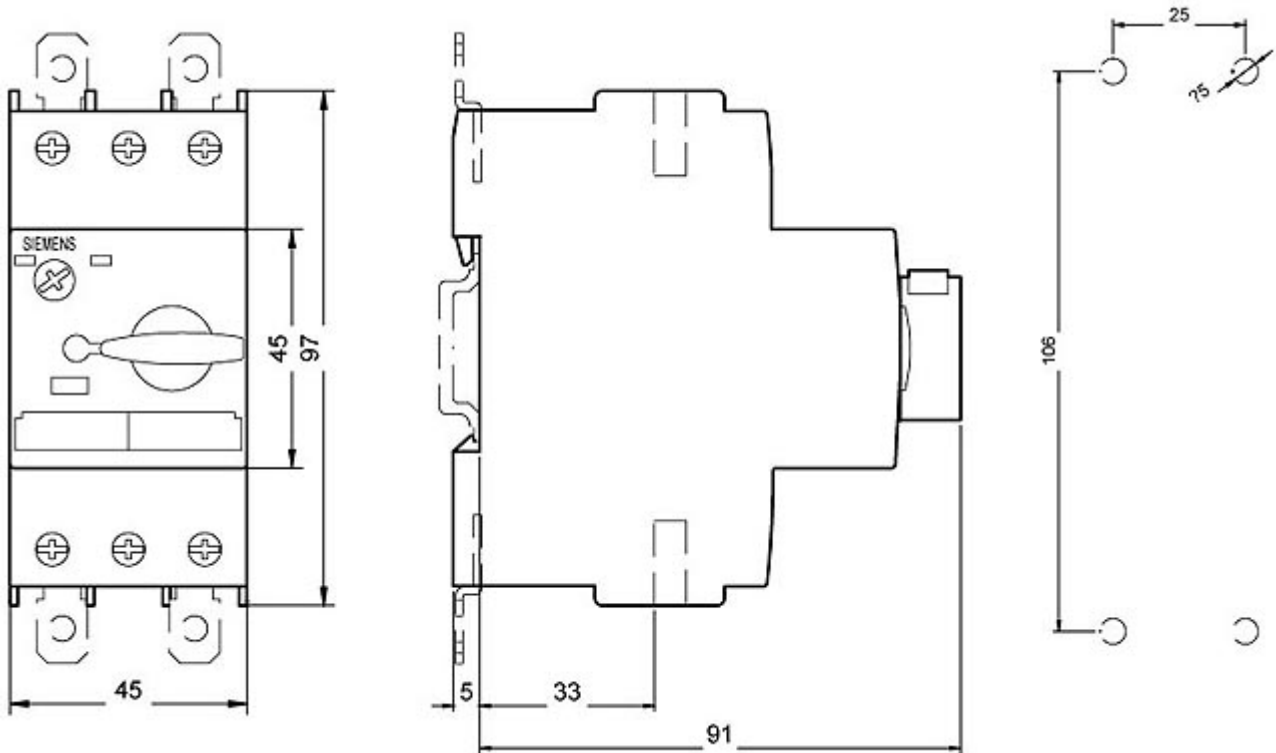
[http://www.automation.siemens.com/bilddb/cax\\_de.aspx?mlfb=3RV1021-0JA10&lang=en](http://www.automation.siemens.com/bilddb/cax_de.aspx?mlfb=3RV1021-0JA10&lang=en)

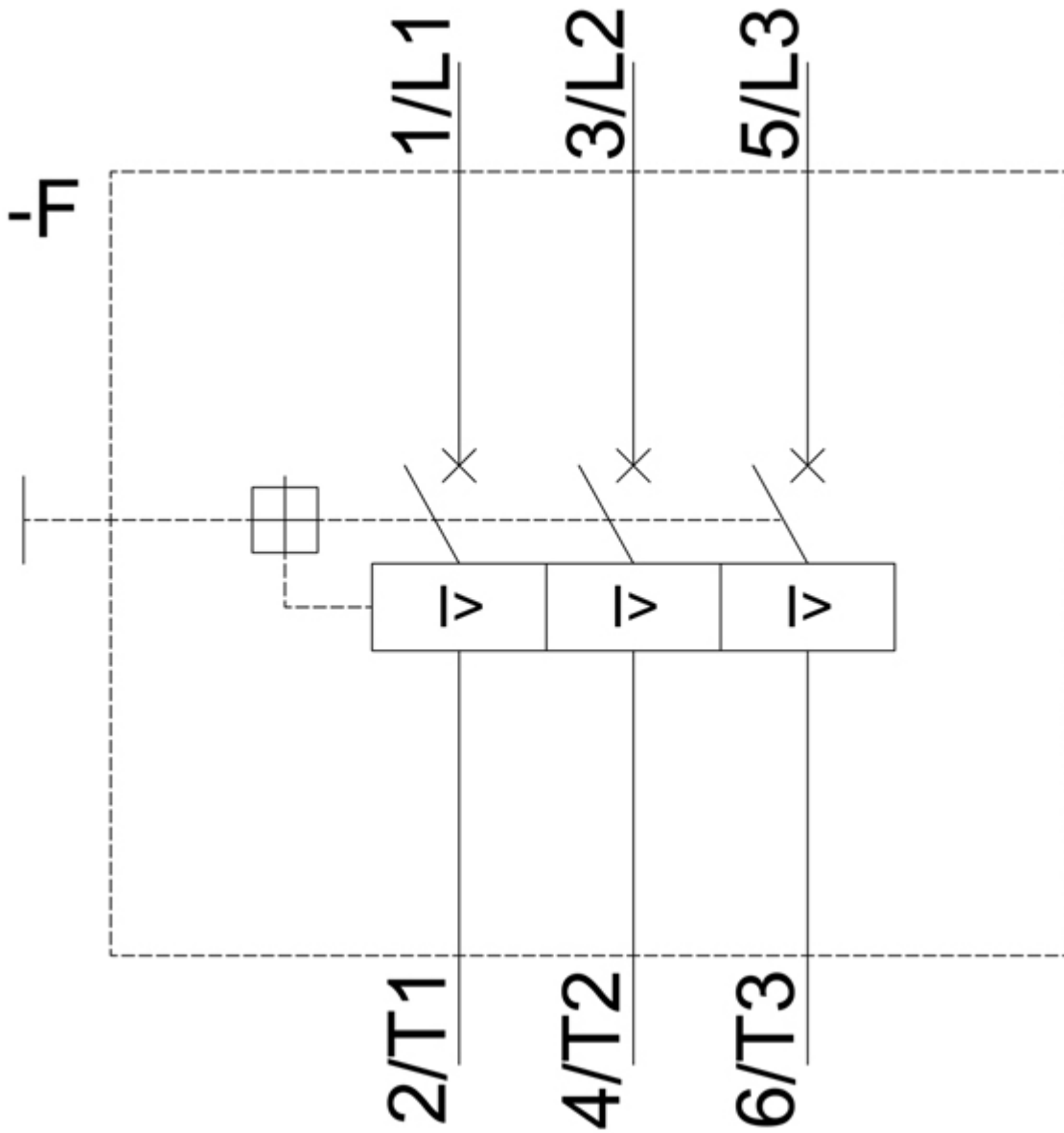
Characteristic: Tripping characteristics, I<sup>2</sup>t, Let-through current

<https://support.industry.siemens.com/cs/ww/en/ps/3RV1021-0JA10/char>

Further characteristics (e.g. electrical endurance, switching frequency)

<http://www.automation.siemens.com/bilddb/index.aspx?view=Search&mlfb=3RV1021-0JA10&objecttype=14&gridview=view1>





last modified:

5/15/2020 